



Max Air 1

Component Replacement Instructions

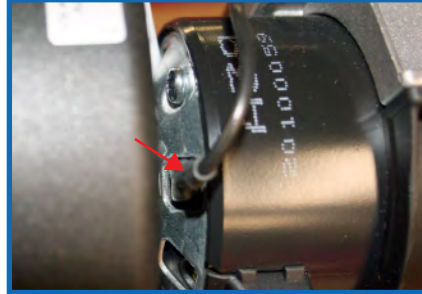
Blower Assembly Removal and Replacement

Remove the female spade connectors from the blower resistor (Fig 1). Remove the ground wire female spade connector from the motor (Fig 2). Remove the 8 screws located on each side of the blower housing with a #2 phillips screw driver (Fig 3). Reverse instructions to install the new blower assembly.

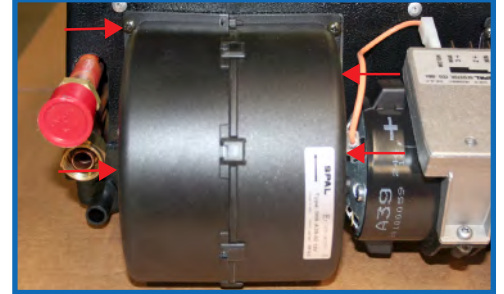
Note: Orange = Max 3+, Red = 2+, Yellow = Min 1+



(Fig 1)



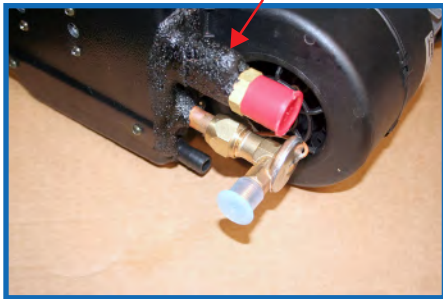
(Fig 2)



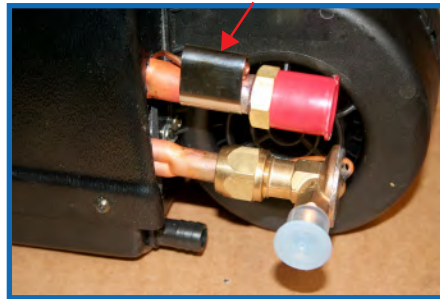
(Fig 3)

Expansion Valve Removal and Replacement

Evacuate the system using an ac refrigerant recovery system. Remove the cork tape exposing the bulb clamp on the low side line of the coil (Fig 1). Remove bulb clamp to be reused (Fig 2). Remove expansion valve using two wrenches using care to not bend the coils copper tube. Lubricate the #8 o-ring with refrigerant oil before installing the new valve. Clean the copper tube and reinstall the bulb clamp and cork tape as shown in (Fig 1). Pull vacuum on the system and wait 30 minutes to insure that the vacuum pressure remains the same which will verify there is no leaks at the new valve before charging the system.



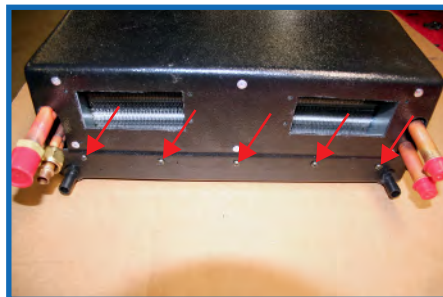
(Fig 1)



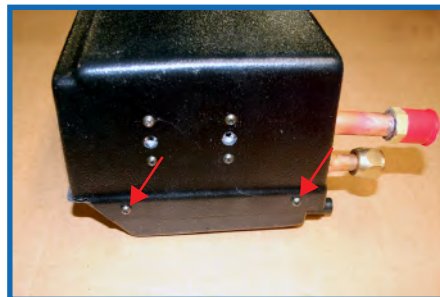
(Fig 2)

Coil Removal and Replacement

Evacuate the system using an ac refrigerant recovery system. Disconnect the A/C lines and drain condensation lines from the unit. Clamp off the heater hose lines and remove the heat hose clamp to disconnect from the unit. Disconnect the blower wires shown above. Remove the 4 air duct hose from the front of the unit. To remove the unit from the vehicle take out the bracket bolts. With the unit out remove the blower assembly shown above. Remove the expansion valve shown above. Remove the duct hose front by removing the 2 screws on top and 2 screws on the bottom. Remove the 5 screws shown in (Fig 1). Remove the 2 screws from both sides of the case shown in (Fig 2). Separate the top and bottom case and replace the coil. Reassemble by following these instructions in reverse. After the unit is reinstalled pull vacuum on the system and wait 30 minutes to insure that the vacuum pressure remains the same which will verify there is no leaks before charging the system.



(Fig 1)



(Fig 2)

NOTE:

We must be contacted first before a warranty claim will be approved. For warranty, parts, additional information please have the model and serial number of the unit. The name of the Coach Builder who installed the unit. Make and model year of vehicle.